



OUR GLOBAL
COMPETENCE
CENTRES

 APOLLO DISPLAY
TECHNOLOGIES



 DISTEC



 DISPLAY
TECHNOLOGY



Datasheet

Distec

POS-IQ-125-00-PRO

12.5" Monitor with x86

MO-06-102



Version 1.3

13.09.2023

Table of Contents

1	Revision History	4
2	Description	5
3	Characteristics	6
3.1	Interfaces	6
4	Mechanical Drawing	7
5	Optional Accessories	8
5.1	Overview	8
5.2	Mounting Frame	9
5.2.1	Mounting instruction	9

1 Revision History

Date	Rev.No.	Description	Page
10.12.2019	0.1	Preliminary Version	All
08.07.2020	0.2	Storage temperature changed from -20°C - +60°C to 0°C - +60°C , updated last page	6, 11
12.08.2020	0.3	Nominal Input Voltage changed from 12 to 9-36V	6
14.01.2021	0.4	Revised description, order of characteristics and new cover/last page	5, 6
16.07.2021	1.0	Release Version; Software Flyer added	5
27.07.2021	1.1	New template	all
08.09.2021	1.2	Optional Accessories: Overview	8
13.09.2023	1.3	12-24V	5-6

2 Description

Distec's 12.5" POS-IQ-125-00-PRO is a CE certified/IP65 proof front monitor solution, powered with an integrated State-of-the-Art embedded PC. Therefore, it is the perfect platform for high-performance visualization projects.

Its robust but slim cover offers all options for integration and various applications. The POS-IQ-125-00-PRO is equipped with an industrial high-brightness display and is designed for long term availability.

The POS-IQ Series features:

- an integrated 10 finger PCAP touchscreen
- an ambient light sensor for automatic brightness adjustment to ambient light conditions
- integrated passive cooling, which allows operating the system under full load even at high ambient temperatures
- VESA Mounting holes for using it as an HMI, mounted on a swivel arm or monitor stand
- As Option: in-wall mounting frame for a variety of integrations in concrete, wooden, or drywall constructions

The integrated IPC offers all advantages of a modern 64bit x86 PC:

- High performance for a passive system due to an Intel® Pentium® N4200 processor
- Dual Gigabit Ethernet, 4 x USB 3.0
- HDMI 1.4b, DisplayPort 1.2 and RS-232/422/485 interfaces
- 4GB highspeed RAM and an industrial grade SSD with 64GB memory
- driven by single 12V-24V power supply
- *As Option:* Wireless - or Bluetooth adapters to be connected via LAN or USB

Available Software:

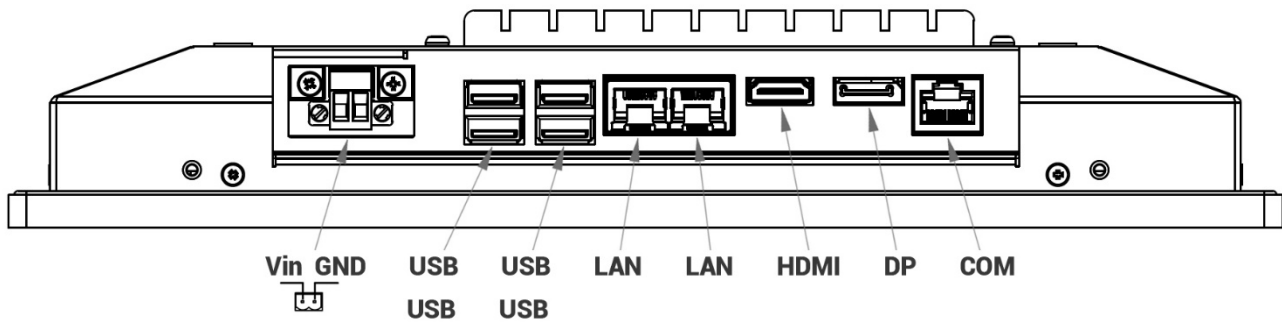
The POS-IQ-PRO series is shipped with Windows 10 embedded off the shelf. Of course the device can be used with different operation systems and various application software can be installed.

More details regarding available application software and operating systems can be found in the [flyer](#).

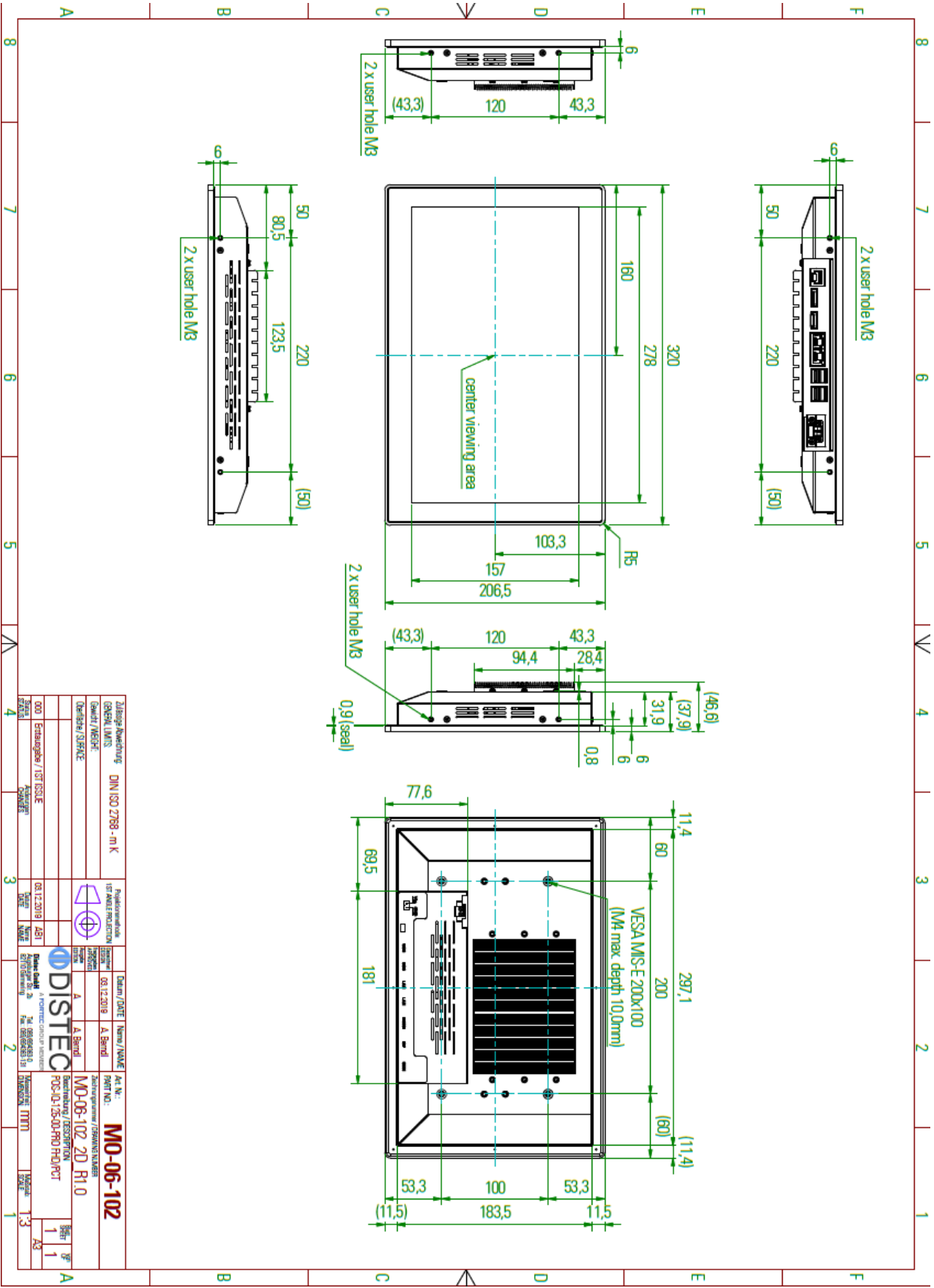
3 Characteristics

Items	Unit	Specification
Screen Diagonal	[inch]	12.5
Pixels H x V		1920 x 1080
Supported Colors		262K (6bit color)
Brightness	[cd/m ²]	240
Viewing Angle	v/h	80/80/80/80
Nominal Input Voltage	[V]	12-24
Typical Power Consumption	[W]	17.2
Memory	GB	4
SSD	GB	64
Electrical Interface		2 x Gbit LAN, 4 x USB 3.0, HDMI, DisplayPort, 1 x RS-232/422/485
PCAP Touchscreen Touchpoints	finger	10
Storage Temperature	[°C]	0 to +60
Operating Temperature Range	[°C]	0 to +50
IP rating		Front IP65
Physical Size H x V x D	[mm]	320 x 206.5 x 46.6
Active Area H x V	[mm]	276.48 x 155.52
Weight	[kg]	1.9

3.1 Interfaces



4 Mechanical Drawing



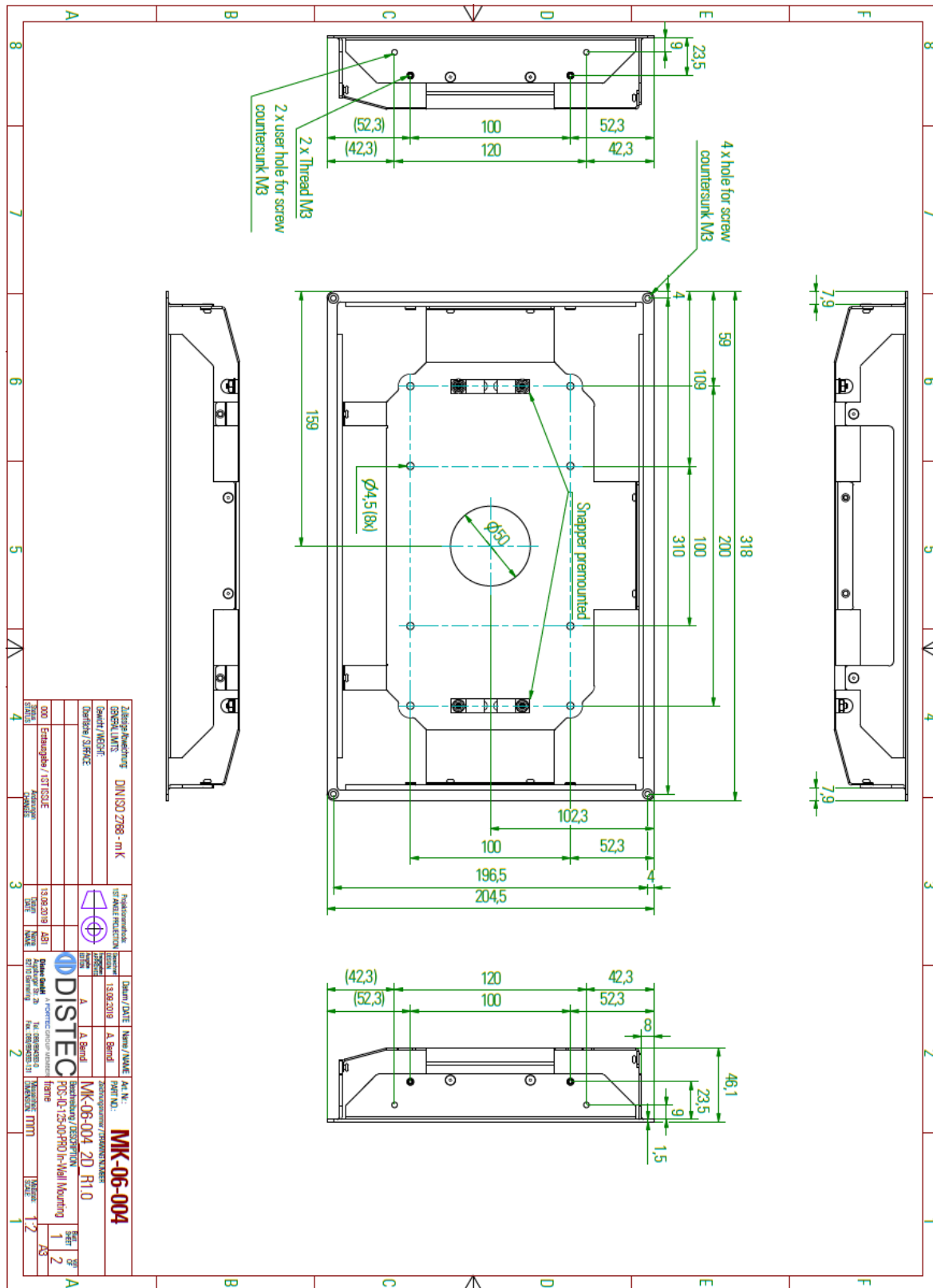
Zulassung/Abweichung		DIN ISO 2768 - m/K		
GENERAL DIMS				
Detail / VISUEL				
Detail / SERVICE				
Erdungsplan / IST ISSE				
000		08.12.2019	ABT	
Distec				
Datum / DATE		08.12.2019		
Name / NAME		A. Bernd		
Teil Nr.		MO-06-102_2D_R1.0		
Zustimmung / DRAWING NUMBER				
PART NO.		MO-06-102_2D_R1.0		
Rev. 1				
Rev. 2				
Rev. 3				

5 Optional Accessories

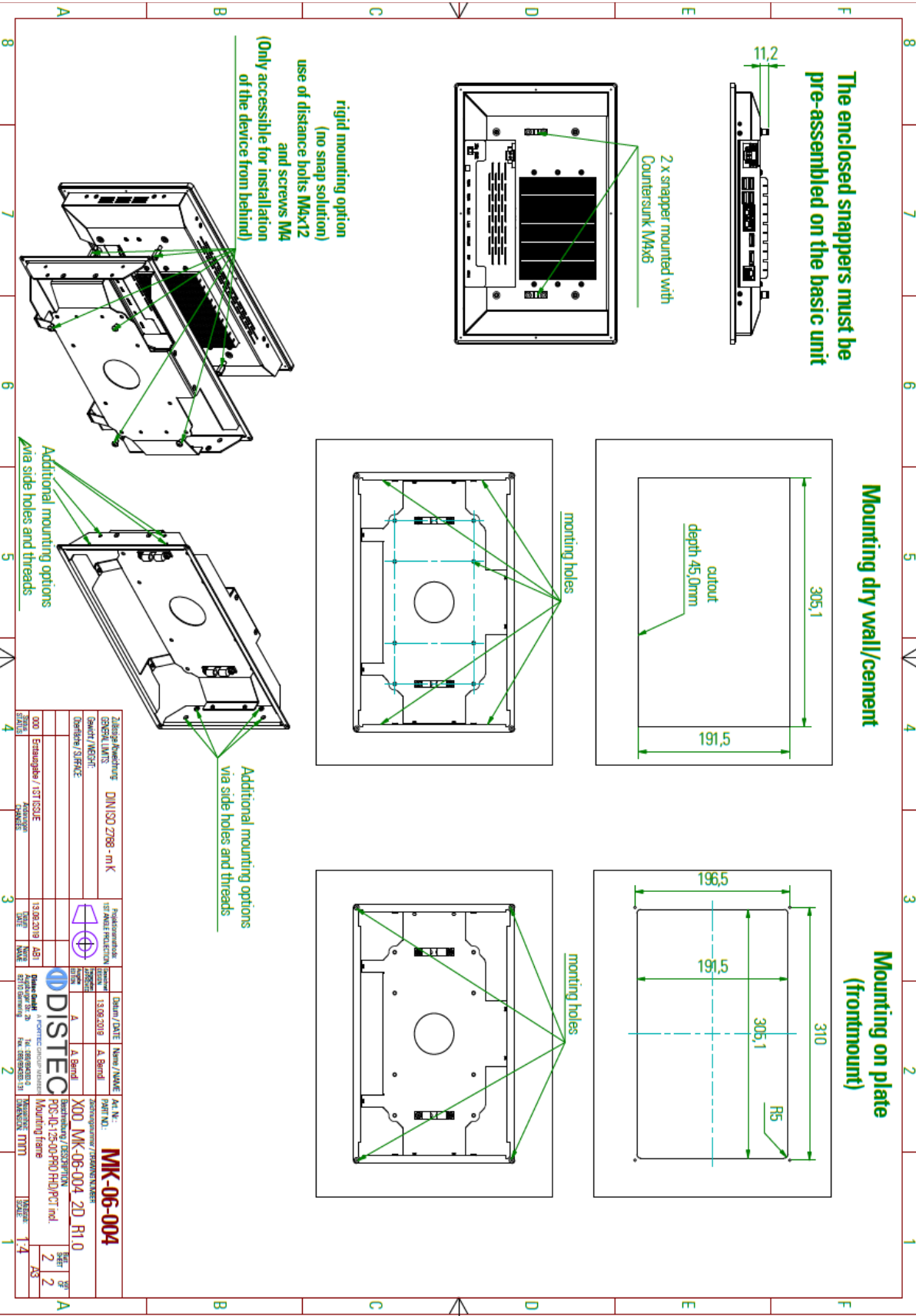
5.1 Overview

Mounting		
In-Wall Mounting Frame	MK-06-004	POS-IQ-125-00-PRO In-Wall mounting Frame
Power Supply Unit		
PSU 12V/5A	NT-01-062	AC Adapter CWT KPL-060F-VI(C14/12V5A)2,1
Power Cord EU	DB-07-225	IEC PowerCord (EU-C13) 3x0,75 black 1,8m
Power Cord UK	DB-07-226	Power Cord (UK - C13) black 1,8m
Power Cord USA	DB-07-238	Power Cord (US-C13) black 1,8m/6 feet
Other		
WiFi	PC-05-071	DELOCK 12462 WLAN Stick/Antenna USB 2.0

5.2 Mounting Frame



5.2.1 Mounting instruction



Our company network supports you worldwide with offices in Germany, Austria, Switzerland, the UK and the USA. For more information please contact:

Headquarters

Germany



FORTEC Elektronik AG

Augsburger Str. 2b
82110 Germering

Phone: +49 89 894450-0
E-Mail: info@fortecag.de
Internet: www.fortecag.de

Fortec Group Members

Austria



Distec GmbH Office Vienna

Nuschingasse 12
1230 Wien

Phone: +43 1 8673492-0
E-Mail: info@distec.de
Internet: www.distec.de

Germany



Distec GmbH

Augsburger Str. 2b
82110 Germering

Phone: +49 89 894363-0
E-Mail: info@distec.de
Internet: www.distec.de

Switzerland



ALTRAC AG

Bahnhofstraße 3
5436 Würenlos

Phone: +41 44 7446111
E-Mail: info@altrac.ch
Internet: www.altrac.ch

United Kingdom



Display Technology Ltd.

Osprey House, 1 Osprey Court
Hinchingsbrooke Business Park
Huntingdon, Cambridgeshire, PE29 6FN

Phone: +44 1480 411600
E-Mail: info@displaytechnology.co.uk
Internet: www.displaytechnology.co.uk

USA



Apollo Display Technologies, Corp.

87 Raynor Avenue, Unit 1
Ronkonkoma, NY 11779

Phone: +1 631 5804360
E-Mail: info@apolloDisplays.com
Internet: www.apolloDisplays.com